

# Dual uplink ports PoE Switch Series New product Introduction

**Surveillance Dedicated**

# CONTENTS



01

Product  
introduction

02

Competing  
comparison

03

Application  
scenario

# CONTENTS



01

Product  
introduction

02

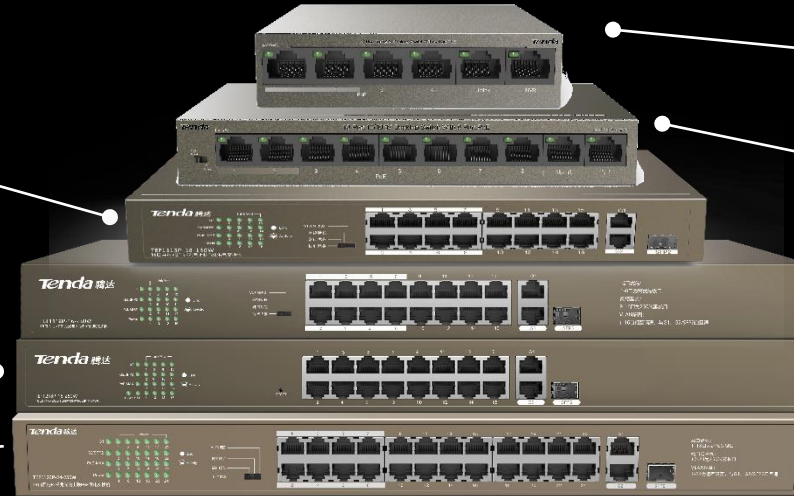
Competing  
comparison

03

Application  
scenario

01

# Appearance



**4FE+2FE, 2 uplink ports**  
Power supply: 63W, PoE: 58W

**8FE+2FE, 2 uplink ports**  
Power supply: 63W, PoE: 58W

**16FE+2GE/1SFP, 2 uplink ports**  
Power supply: 250W, PoE: 230W

**16FE+2GE/1SFP, 2 uplink ports**  
Power supply: 150W, PoE: 130W

**16FE+2GE/1SFP, 2 uplink ports**  
Power supply: 250W, PoE: 230W  
Managed

**24FE+2GE/1SFP, 2 uplink ports**  
Power supply: 250W, PoE: 230W

## Dual uplink ports PoE Switch Series Products

TEF1106P-4-63W

TEF1110P-8-63W

TEF1118P-16-150W

TEF1118P-16-250W

TEF1218P-16-250W

TEF1126P-24-250W  
(High power version  
is 410W)

01

# Advantages



AF/AT

PoE Power supply



Two Uplink ports



6KV Lightning protection



QoS Priority



Extend

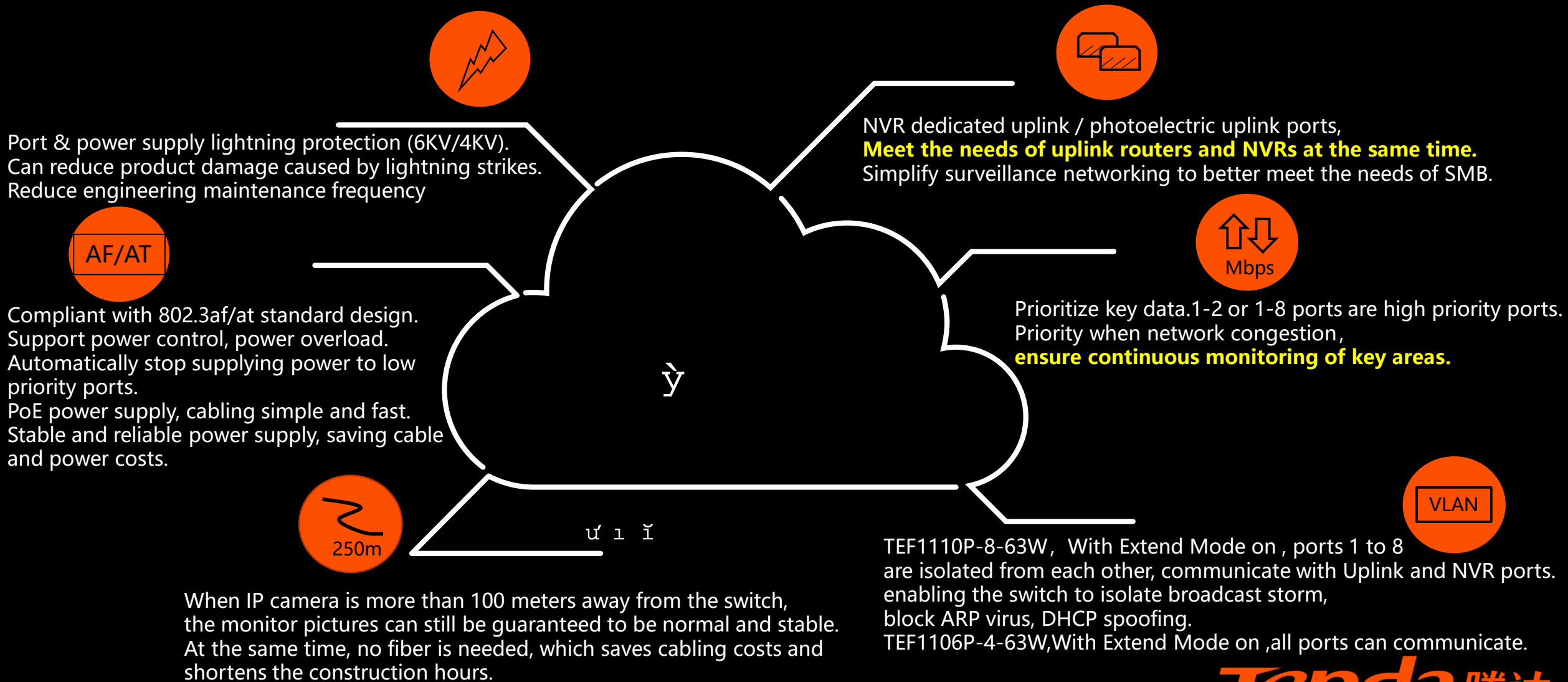
VLAN

VLAN

**Tenda** 腾达

## 01

## Advantages

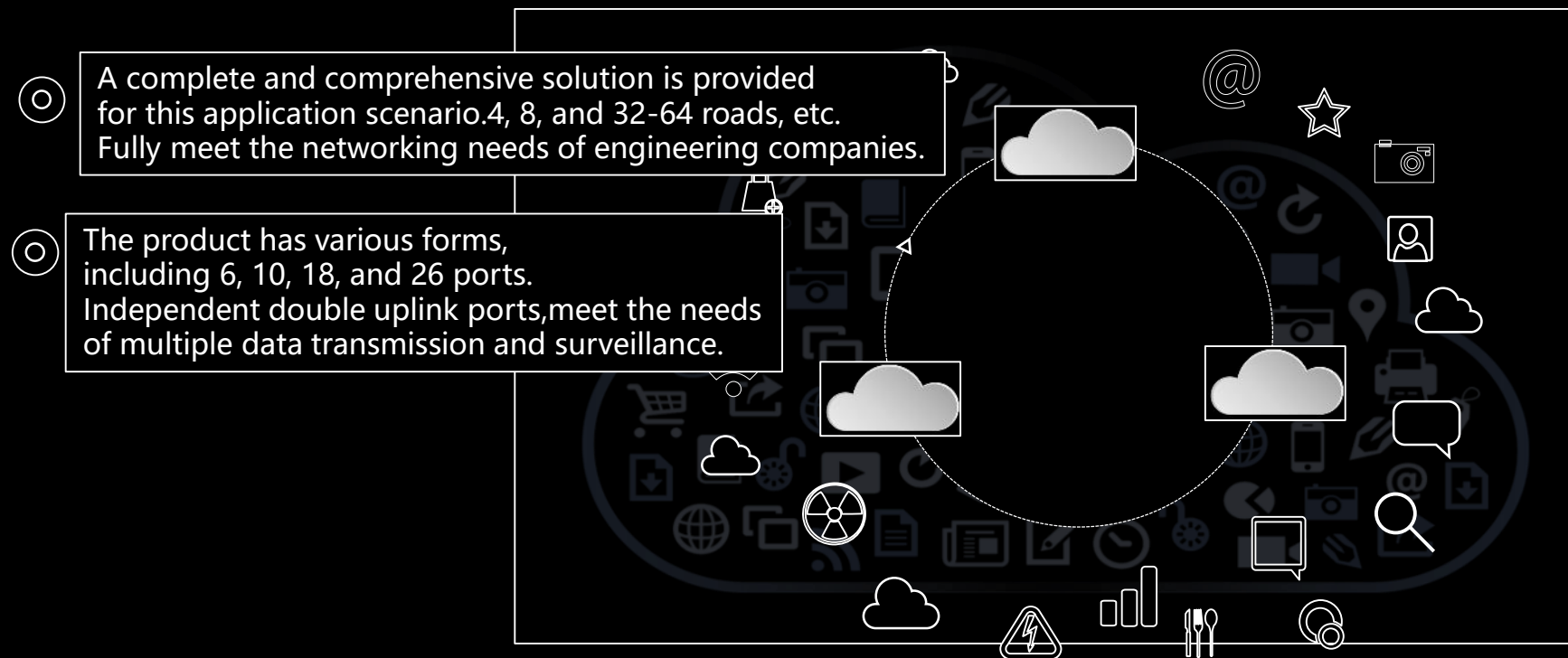


01

# Engineering Advantages

**Transmission keeps flowing day and night ,  
key areas are not stuck.**

**we can meet all the engineering needs.**



- ③ Unstable network transmission—>VLAN
- ④ Monitoring Caton—>QoS Priority
- ⑤ Lightning strike—>6KV Lightning Protection
- ⑥ Load overrun—>Standard PoE; Intelligent power management.
- ⑦ IP camera is far away from the switch, which increases the transmission costs—> Extend mode, 250m long distance transmission

# CONTENTS



01

Product  
introduction

02

Competing  
comparison

03

Application  
scenario



Comparison	TEF1105P-4-63W	TEF1106P-4-63W	TEF1109P-8-63W	TEF1110P-8-63W
Interface	5*FE(4*PoE)	6*FE(4*PoE)	9*FE(8*PoE)	10*FE(8*PoE)
Packet forwarding rate	0.74Mpps	0.89Mpps	1.34Mpps	1.48Mpps
Switching Capacity	1Gbps	1.2Gbps	1.8Gbps	1.6Gbps
MAC Address Table	1K	1K	4K	1K
Lightning Protection	6KV for ports, 4KV for power supply	6KV for uplink ports, 4KV for power supply	6KV for ports, 4KV for power supply	6KV for uplink ports, 4KV for power supply
PoE Power Consumption	58W	58W	58W	58W
Dimension	100*100*26mm	100*100*26mm	177.5*104*26mm	177.5*104*26mm
Modes	Standard、Extend	Standard、Extend、Priority	Standard、Extend	Standard、Extend、Priority、VLAN

Comparison	TEF1118P-16-150WV1.0	TEF1118P-16-150WV2.0	TEF1118P-16-250W (High power version)
Interface	16*FE(16*PoE)+1GE+1SFP	16*FE(16*PoE)+1GE+1GE/SFP	16*FE(16*PoE)+1GE+1GE/SFP
Packet forwarding rate	5.37Mpps	5.37Mpps	5.37Mpps
Switching Capacity	7.2Gbps	7.2Gbps	7.2Gbps
MAC Address Table	1K	4K	4K
Lightning Protection	6KV for ports, 6KV for power supply	6KV for ports, 6KV for power supply	6KV for ports, 6KV for power supply
PoE Power Consumption	135W	130W	230W
Dimension	294*178.8*44mm	294*178.8*44mm	440*178.8*44mm
Modes	Standard、Monitor、VLAN、Extend	Standard、Priority、Extend、VLAN	Standard、Priority、Extend、VLAN

Comparison	TEF1218P-16-250WV2.0	TEF1218P-16-250WV3.0	TEF1126P-24-250WV1.0	TEF1126P-24-250WV2.0
Interface	16*FE(16*PoE)+2GE/2SFP	16*FE(16*PoE)+1GE+1GE/SFP	24*FE(24*PoE)+1GE+1SFP	24*FE(24*PoE)+1GE+1GE/SFP
Packet forwarding rate	5.37Mpps	5.37Mpps	6.55Mpps	6.55Mpps
Switching Capacity	7.2Gbps	7.2Gbps	8.8Gbps	8.8Gbps
MAC Address Table	4K	4K	4K	16K
Lightning Protection	6KV for ports, 6KV for power supply	6KV for ports, 6KV for power supply	6KV for ports, 6KV for power supply	6KV for ports, 6KV for power supply
PoE Power Consumption	230W	230W	225W	230W
Dimension	440*284*44mm	440*178.8*44mm	294*215*44mm	440*178.8*44mm
Modes	Web management	Web management	Standard、Monitor、VLAN、Extend	Standard、Priority、Extend、VLAN

Tenda Model	specification	Other Model	specification
TEF1118P-16-150WV2.0	1GE+1GE/SFP uplink ports; PoE: 130W; Dimension: 294*178.8*44mm	TL-SL1218MP	2GE uplink ports; PoE: 119W; Dimension: 294*180*44mm
TEF1118P-16-250W (High power version)	1GE+1GE/SFP uplink ports; PoE: 230W; Dimension: 440*178.8*44mm	TL-SL1218P	2FE uplink ports; PoE: 180W; Dimension: 294*180*44mm
TEF1218P-16-250WV3.0	1GE+1GE/SFP uplink ports; PoE: 230W; Dimension: 440*178.8*44mm; Web management	TL-SL1218PE	2GE/SFP uplink ports; PoE: 235W; Dimension: 440*180*44mm
TEF1126P-24-250WV2.0	1GE+1GE/SFP uplink ports; PoE: 230W; Dimension: 440*178.8*44mm	TL-SL1226MP	2GE uplink ports; PoE: 180W; Dimension: 440*180*44mm
TEF1126P-24-410W (High power version)	1GE+1GE/SFP uplink ports; PoE: 370W; Dimension: 440*178.8*44mm	TL-SL1226PE	2GE/SFP uplink ports; PoE: 384W; Dimension: 440*330*44mm
TEF1106P-4-63W	2FE uplink ports; PoE: 58W; Dimension: 100*100*26mm	TL-SF1006P	2FE uplink ports; PoE: 57W; Dimension: 100*98*25mm
TEF1110P-8-63W	2FE uplink ports; PoE: 58W; Dimension: 177.5*104*26mm	TL-SL1210P	2GE uplink ports; PoE: 56W; Dimension: 171*98*27mm

# CONTENTS



01

Product  
introduction

02

Competing  
comparison

03

Application  
scenario

## Dual uplink ports PoE Switch Series Products

Application scenario	Shops & Houses	Buildings (SMB、Hotel)
Transmission rate	100M	100M/1000M
Number of IP camera		
4*200w IPCs	TEF1105P	TEG1105P
	<b>TEF1106P</b>	
8*200w IPCs	TEF1109D/TEF1109P	TEF1109TP
	<b>TEF1110P</b>	TEG1109P
32~64*200/400w IPCs	<b>TEF1118P/TEF1126P</b>	<b>TEF1118P/TEF1126P/TEF1226P</b>
	TEF1026F	TEF1026F/TEG1024F
64~128*200/400w IPCs	/	<b>TEF1118P/TEF1126P/TEF1226P</b>
		TEF1026F/TEG1024F
128~200*200/400/500w IPCs	/	<b>TEF1118P/TEF1126P/TEF1226P</b>
		TEF1026F/TEG1024F



03

## Application scenario(4+2/8+2)

Outdoor monitoring

Office monitoring

Shop monitoring



03

## Application scenario(16+2/24+2)





# Thanks!